

AMENDED PLAT OF WASHINGTON TERRACE PARCEL 'D'

BLOCKS 5, 6 & 7 IN WASHINGTON TERRACE CITY

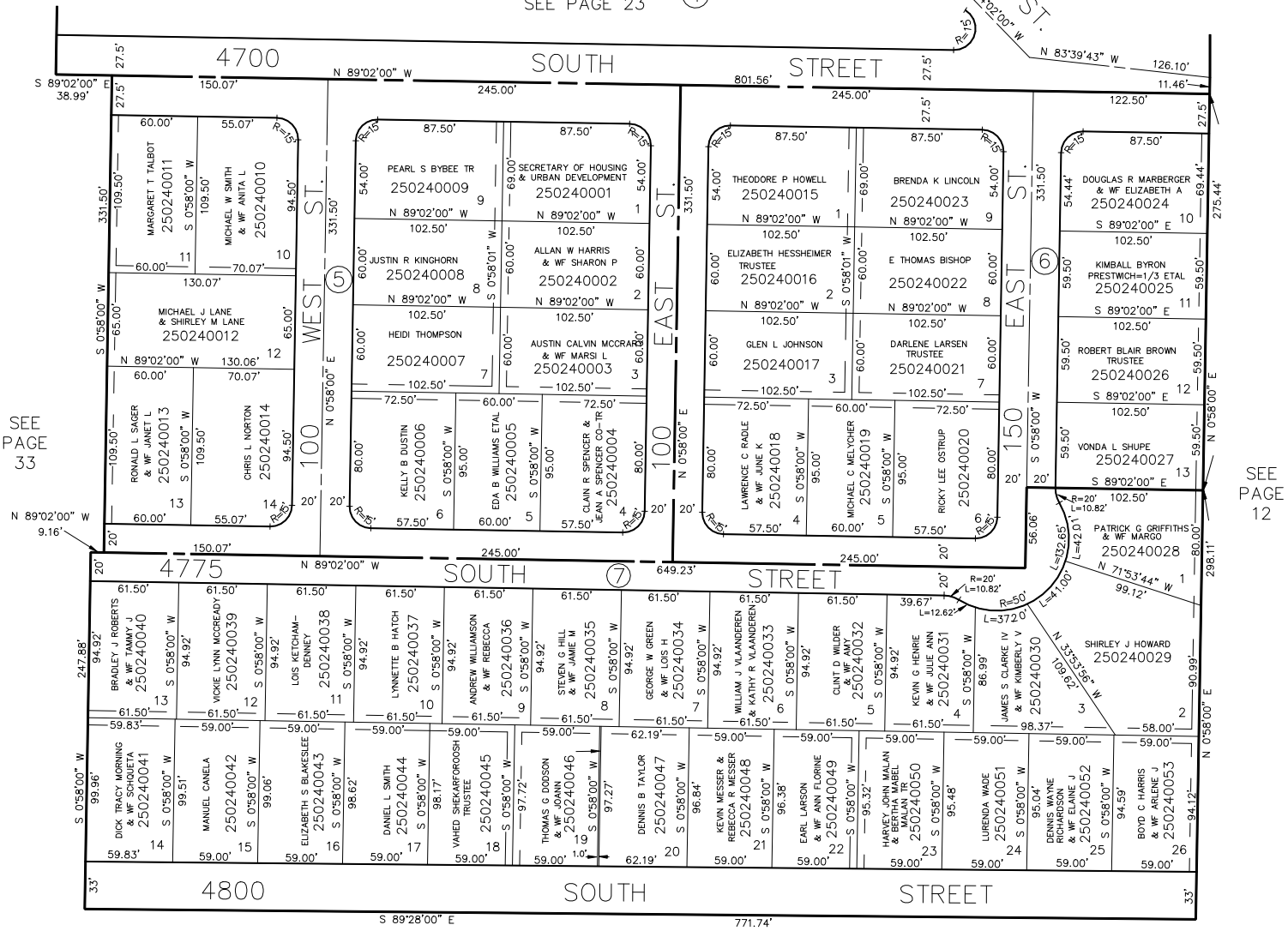
SCALE 1" = 60'

TAXING UNIT: 24

SEE PAGE 23



4600 S. ST. N 44°02'00" W



SEE PAGE 33

SEE PAGE 12

SEE BOOK 7, PAGE 51

5' UTILITY & DRAINAGE EASEMENTS EACH SIDE OF PROPERTY LINES AS INDICATED BY DASHED LINES EXCEPT AS OTHERWISE SHOWN.

FOR COMPLETE ENG DATA SEE ORIGINAL DEDICATION PLAT IN BOOK 11, PAGE 55 OF RECORDS.